



**INFINITE  
INNOVATIONS**

## Vehicle Specific Flagstaff Mounting Kits

FLAGSTAFF BRACKETS - REMOVE THE ENTIRE BRACKET!!

**The REMOVEABLE BRACKET flagstaff kit. This new mounting style offers the convenience of now removing the entire bracket, as well as the staff, when not in use. This will allow drivers to remove the entire bracket. No more concerns when parking, washing the car and having an unattractive bracket sticking out to snag on.**



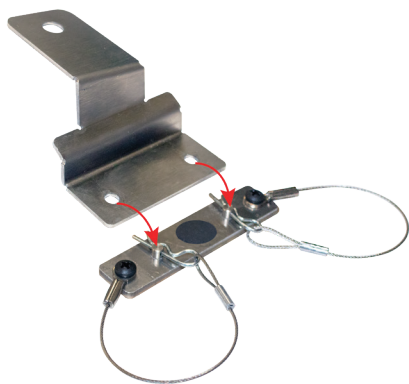
To prep MKT, open hood. Remove the hood seal off of the edge of fender. Starting at the front of the car, measure the seal 6-1/2" back and cut this section off.



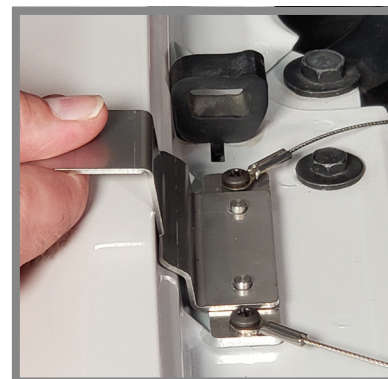
Measure 2-1/2" from the new cut end of seal. Drill a 1/8" pilot hole through the seal. See red dot in the image for reference. This will help you locate the hole later.



Install the bracket base onto the fender in location shown on image. With the bracket & base tight against the fender edge, drill 1/8" holes into fender where the base mounting holes are, mounting the base with the screws included in the kit. Install clips? Reinstall the weatherstrip(which piece?) Drill 1/8" hole into the fender edge through the pilot hole on the top of weatherstrip. Secure the weatherstrip by installing the flat head screw to secure weatherstrip



Secure the mounting base to the inner fender.



Place mounting bracket over the base upright studs.



Secure bracket with retaining pins.



Place flagstaff into mounting hole and screw to secure.



Install flag and close hood.